

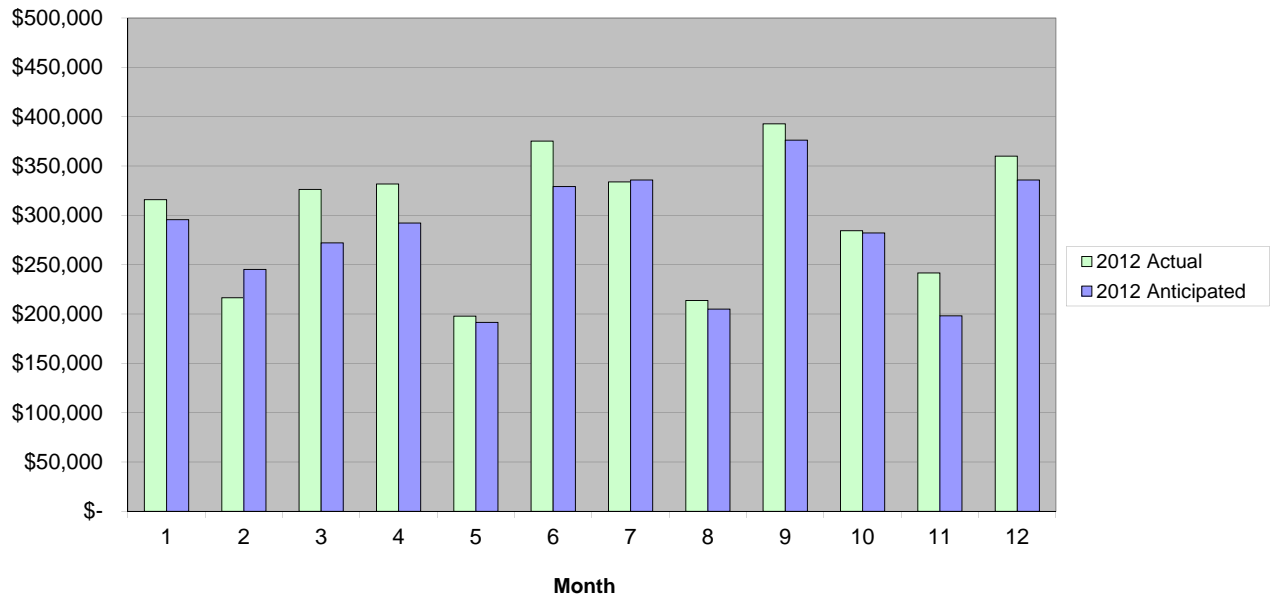
Clay County, Missouri
 Carol McCaslin, Treasurer
 1 Courthouse Square
 Liberty, Missouri 64068
 phone: (816) 407-3540

2012 Law Enforcement Sales Tax

2012 Law Enforcement SALES TAX	JANUARY	FEBRUARY	MARCH	APRIL	MAY	JUNE			
by month received									
2012 Actual	\$ 315,938.33	\$ 216,484.50	\$ 326,426.19	\$ 331,927.69	\$ 197,826.87	\$ 375,266.53			
2012 Anticipated	\$ 295,680.00	\$ 245,280.00	\$ 272,160.00	\$ 292,320.00	\$ 191,520.00	\$ 329,280.00			
2011 Actual	\$ 284,159.58	\$ 292,228.87	\$ 191,790.61	\$ 344,399.92	\$ 249,574.79	\$ 313,271.76			
10% to TIF	\$ 31,593.83	\$ 21,648.45	\$ 32,642.61	\$ 33,192.77	\$ 19,782.69	\$ 37,526.65			
% of 2011	111.18%	74.08%	170.20%	96.38%	79.27%	119.79%			
Budget vs. Actual	2025833.00%	-2879550.00%	5426619.00%	3960769.00%	630687.00%	4598653.00%			
2012 vs. 2011	3177875.00%	-7574437.00%	13463558.00%	-1247223.00%	-5174792.00%	6199477.00%			
cumulative over/(under) budget	2025833.00%	-853717.00%	4572902.00%	8533671.00%	9164358.00%	13763011.00%			
cumulative % over/(under) budget	6.85%	-1.58%	5.62%	7.72%	7.07%	8.46%			
	JULY	AUGUST	SEPTEMBER	OCTOBER	NOVEMBER	DECEMBER	TOTALS		
by month received	\$ 334,038.98	\$ 213,709.97	\$ 392,924.70	\$ 284,583.00	\$ 241,738.62	\$ 360,107.12	\$ 3,590,972.50		
2012 Actual	\$ 336,000.00	\$ 204,960.00	\$ 376,320.00	\$ 282,240.00	\$ 198,240.00	\$ 336,000.00	\$ 3,360,000.00		
2012 Anticipated	\$ 361,047.61	\$ 207,871.72	\$ 382,228.23	\$ 288,024.76	\$ 235,361.85	\$ 350,872.04	\$ 3,500,831.74		
2011 Actual	\$ -	\$ -	\$ -	\$ -	\$ -	\$ -	\$ -		
10% to TIF	\$ -	\$ -	\$ -	\$ -	\$ -	\$ -	\$ -		
% of 2011	\$ (1,961.02)	\$ 8,749.97	\$ 16,604.70	\$ 2,343.00	\$ 43,498.62	\$ 24,107.12	\$ 230,972.50		
Budget vs. Actual	\$ (27,008.63)	\$ 5,838.25	\$ 10,696.47	\$ (3,441.76)	\$ 6,376.77	\$ 9,235.08	\$ 90,140.76		
2012 vs. 2011	\$ 135,669.09	\$ 144,419.06	\$ 161,023.76	\$ 163,366.76	\$ 206,865.38	\$ 230,972.50	\$ -		
cumulative over/(under) budget	\$ 0.07	\$ 0.07	\$ 0.06	\$ 0.06	\$ 0.07	\$ 0.07	\$ -		
cumulative % over/(under) budget	\$ -	\$ -	\$ -	\$ -	\$ -	\$ -	\$ -		

2012 Law Enforcement Sales Tax

2012 Law Enforcement Sales Tax Actual vs. Budget



Law Enforcement Sales Tax 2012 vs. 2011

