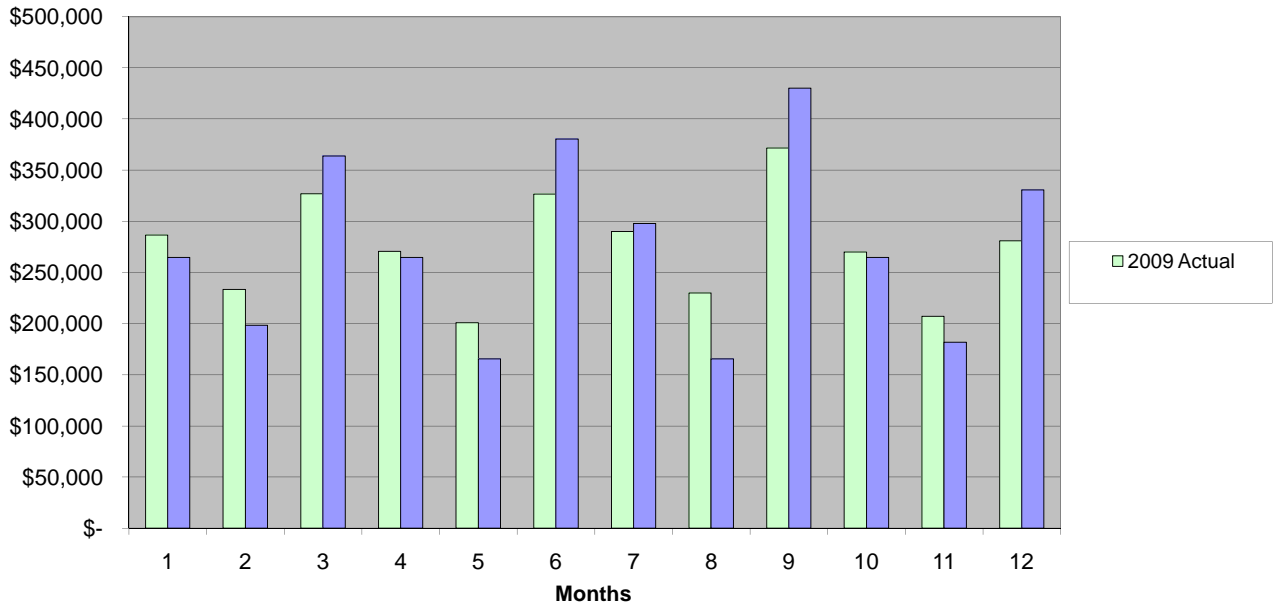


Clay County, Missouri  
 Carol McCaslin, Treasurer  
 1 Courthouse Square  
 Liberty, Missouri 64068  
 phone: (816) 407-3540

## 2009 Law Enforcement Sales Tax

2009 Law Enforcement SALES TAX	JANUARY	FEBRUARY	MARCH	APRIL	MAY	JUNE			
<b>by month received</b>									
<b>2009 Actual</b>	\$ 286,685.00	\$ 233,472.57	\$ 326,834.25	\$ 270,533.05	\$ 200,839.05	\$ 326,735.40			
<b>2009 Anticipated</b>	\$ 264,600.00	\$ 198,450.00	\$ 363,825.00	\$ 264,600.00	\$ 165,375.00	\$ 380,362.50			
<b>2008 Actual</b>	\$ 288,674.25	\$ 288,940.43	\$ 350,284.66	\$ 325,919.81	\$ 210,406.53	\$ 371,960.78			
	\$ -	\$ -	\$ -	\$ -	\$ -	\$ -			
<b>% of 2008</b>	\$ 0.99	\$ 0.81	\$ 0.93	\$ 0.83	\$ 0.95	\$ 0.88			
<b>Budget vs. Actual</b>	\$ 22,085.00	\$ 35,022.57	\$ (36,990.75)	\$ 5,933.05	\$ 35,464.05	\$ (53,627.10)			
<b>2009 vs. 2008</b>	\$ (1,989.25)	\$ (55,467.86)	\$ (23,450.41)	\$ (55,386.76)	\$ (9,567.48)	\$ (45,225.38)			
<b>cumulative over/(under) budget</b>	\$ 22,085.00	\$ 57,107.57	\$ 20,116.82	\$ 26,049.87	\$ 61,513.92	\$ 7,886.82			
<b>cumulative % over/(under) budget</b>	8.35%	12.33%	2.43%	2.39%	4.89%	0.48%			
	JULY	AUGUST	SEPTEMBER	OCTOBER	NOVEMBER	DECEMBER	TOTALS		
<b>2009 Actual</b>	\$ 289,853.63	\$ 230,031.47	\$ 371,617.19	\$ 269,919.70	\$ 207,018.45	\$ 280,989.69	\$ 3,294,529.45		
<b>2009 Anticipated</b>	\$ 297,675.00	\$ 165,375.00	\$ 429,975.00	\$ 264,600.00	\$ 181,912.50	\$ 330,750.00	\$ 3,307,500.00		
<b>2008 Actual</b>	\$ 332,901.26	\$ 225,814.59	\$ 425,862.29	\$ 284,742.58	\$ 214,070.47	\$ 317,001.63	\$ 3,636,579.28		
	\$ -	\$ -	\$ -	\$ -	\$ -	\$ -	\$ -		
<b>% of 2008</b>	\$ 0.87	\$ 1.02	\$ 0.87	\$ 0.95	\$ 0.97	\$ 0.89	\$ 0.91		
<b>Budget vs. Actual</b>	\$ (7,821.37)	\$ 64,656.47	\$ (58,357.81)	\$ 5,319.70	\$ 25,105.95	\$ (49,760.31)	\$ (12,970.55)		
<b>2009 vs. 2008</b>	\$ (43,047.63)	\$ 4,216.88	\$ (54,245.10)	\$ (14,822.88)	\$ (7,052.02)	\$ (36,011.94)	\$ (342,049.83)		
<b>cumulative over/(under) budget</b>	\$ 65.45	\$ 64,721.92	\$ 6,364.11	\$ 11,683.81	\$ 36,789.76	\$ (12,970.55)			
<b>cumulative % over/(under) budget</b>	0.00%	3.08%	0.25%	0.42%	1.24%	-0.39%			

**2009 Law Enforcement Sales Tax Actual vs. Budget**



**Law Enforcement Sales Tax 2009 vs. 2008**

