



SUMMER 2020 EDITION

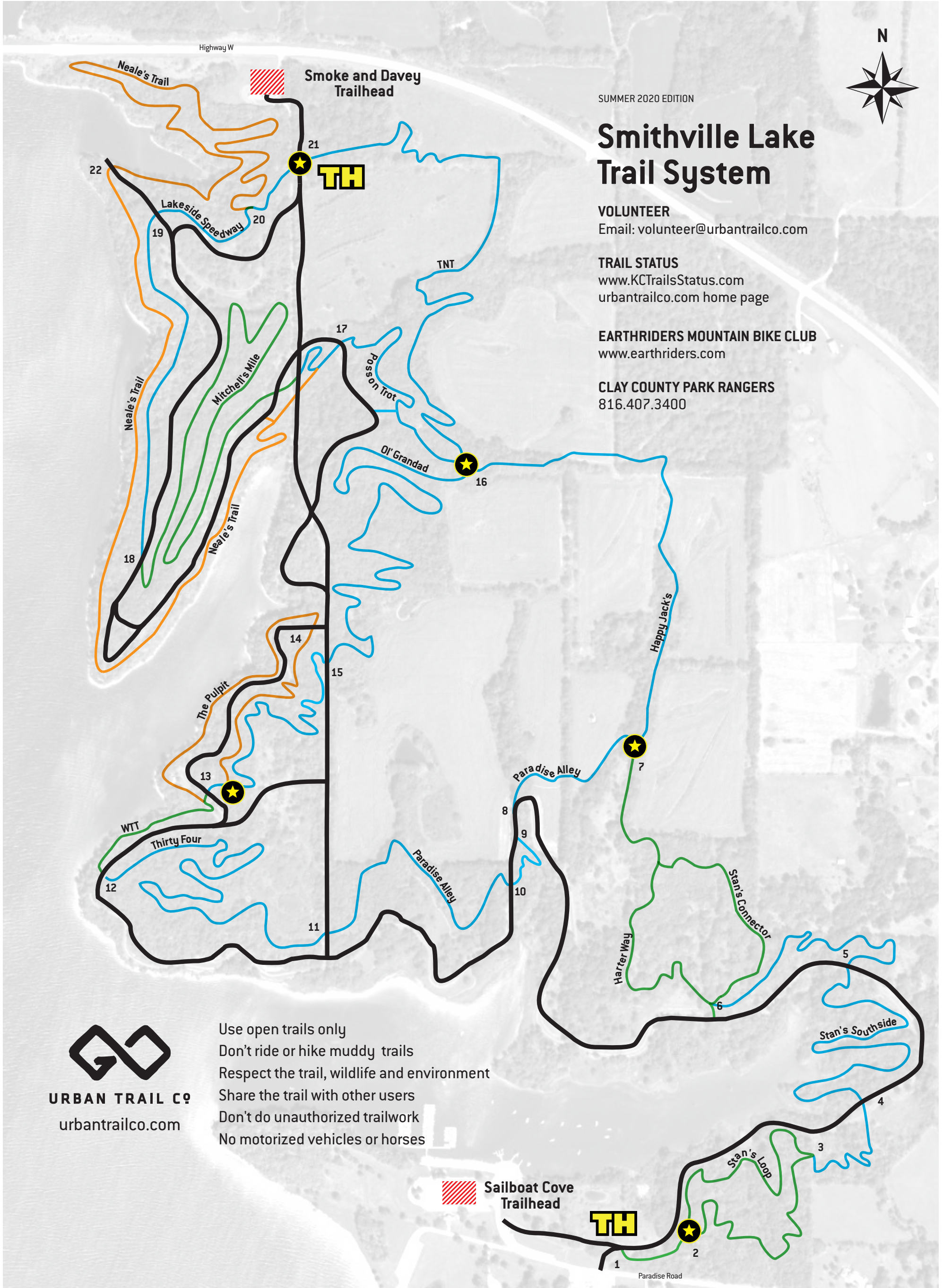
Smithville Lake Trail System

VOLUNTEER
Email: volunteer@urbantrailco.com

TRAIL STATUS
www.KCTrailsStatus.com
urbantrailco.com home page

EARTHRIDERS MOUNTAIN BIKE CLUB
www.earthriders.com

CLAY COUNTY PARK RANGERS
816.407.3400









URBAN TRAIL CO
urbantrailco.com

Use open trails only
Don't ride or hike muddy trails
Respect the trail, wildlife and environment
Share the trail with other users
Don't do unauthorized trailwork
No motorized vehicles or horses

-  Paved
Smooth but hilly in places
-  Easy
Very few obstacles, relatively flat
-  Challenging
Some obstacles, up and down hills
-  Difficult
Occasional difficult obstacles, strenuous
-  Parking
-  Trailhead
-  Main Hubs

TRAIL / MILEAGE

-  Neale's 2.2
-  Lakeside Speedway .6
-  TNT .7
-  Happy Jack's .6
-  Mitchell's Mile 1.1
-  Paradise Alley .6
-  Posson Trot .4
-  OI' Grandad 1.3
-  WTT .6
-  The Pulpit .7
-  Thirty Four .7
-  Harter Way .3
-  Stan's Connector .4
-  Stan's Southside 1
-  Stan's Loop .9



Use Descriptions
(Bike, Hike, No Horses)

— Difficulty Rating

— Intersection Number